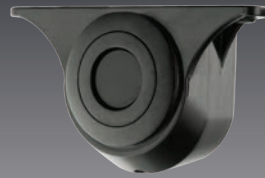


Obstacle Detection

- Obstacle detection rate under 200 milliseconds.
- Adjustable distance for outer sensors.
- Backscan includes in-cab visual display.
- 3 stage warning zones.
- Environmental Learning Mode prevents false alarms.
- Multiple sensor mount types included.
- Backscan incorporates 50cm compensation range for inboard mounted sensors (selectable via dip switch).
- One trigger output.
- Self diagnostic function.
- Sensors & ECU environmentally sealed - IP68.
- Multi-voltage.
- 2 year warranty.



Ultrasonic

BS-4000W



Voltage :	12-24V
Current Draw :	0.2A
Detection Range :	Backscan up to 2.5m
	Frontscan up to 2.1m
Harness :	ECU to Display 15m
	ECU to Sensors & Buzzer 2.5m
EMC :	CE & 'e' marked
Standards :	RoHS compliant
Operating Temp :	-40°C to 80°C
IP Rating :	Display & Buzzer IP54
	ECU & Sensors IP68



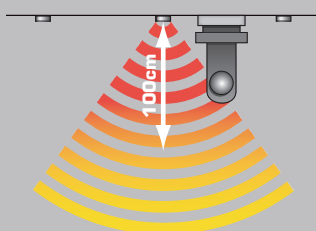
Ultrasonic Backscan
BS-4000W



Ultrasonic Frontscan
BS-4000W

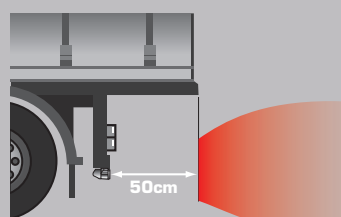
Environment Learning

Environment Learning Mode prevents false alarms from tow-hooks and other ancillary fixed equipment that intrudes into the first 100cm of the detection zone.



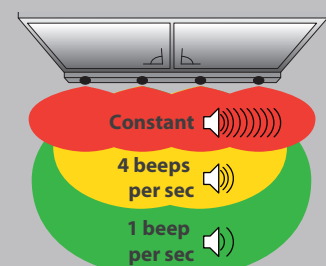
50cm Compensation

50 centimeter compensation for installation to vehicles with in-board bumpers / tray over hang.

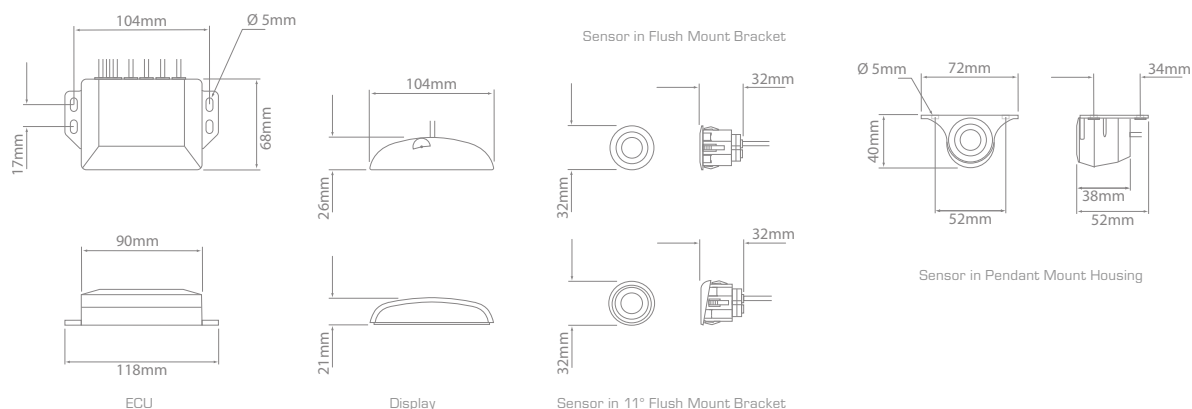


Warning Zone

The frequency of the signal changes according to the distance from sensors to the object.



Obstacle Detection



Ultrasonic - Backscan

Part No.

Max. Detection Distance

BS-4000W

2.5m or 0.6m*

*Outer sensors max. detection distance 2.5m or 0.6m (selectable via dip switch).

Kits Contain:

1 x Backscan ECU

1 x Backscan Display

4 x Sensor

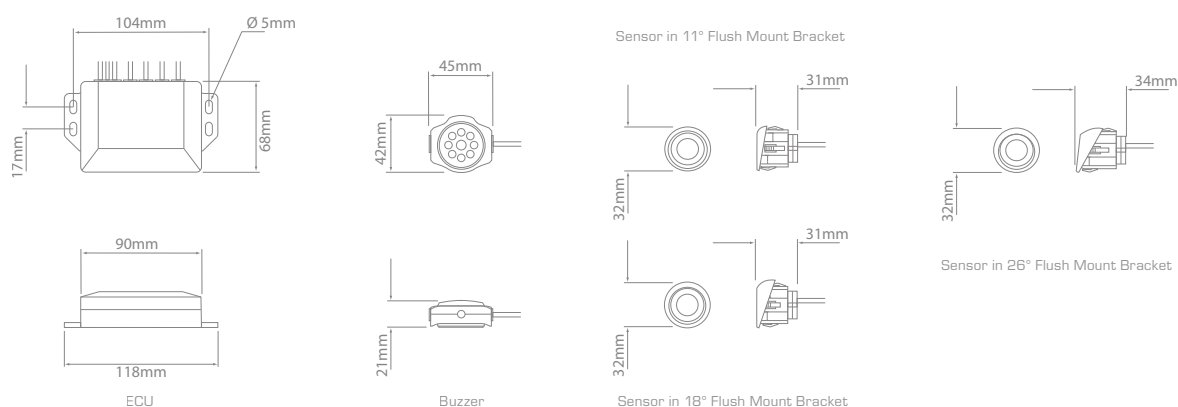
4 x Pendant mount housing

4 x Sensor Bracket - 0° Flush Mount

4 x Sensor Bracket - 11° Flush Mount

4 x ECU to Sensor Harness

1 x ECU to Display Harness



Ultrasonic - Frontscan

Part No.

Max. Detection Distance

FS-4000W

2.1m or 0.6m*

*Outer sensors max. detection distance 2.1m or 0.6m (selectable via dip switch).

Kits Contain:

1 x Frontscan ECU

1 x Buzzer

4 x Sensor

4 x Sensor Bracket - 11° Flush Mount

4 x Sensor Bracket - 18° Flush Mount

4 x Sensor Bracket - 26° Flush Mount

4 x ECU to Sensor Harness

1 x ECU to Buzzer Harness