

USER'S MANUAL FOR TRUCK PARKING SENSOR
DT0004K3(12/24V)

The System consists of 4 digital sensors, one control box, one buzzer and one wiring harness. The system is activated when the ignition is turned on and reverse gear is engaged. The system measures the distance of the closest obstacle and then the buzzer will warn driver by warning beep.

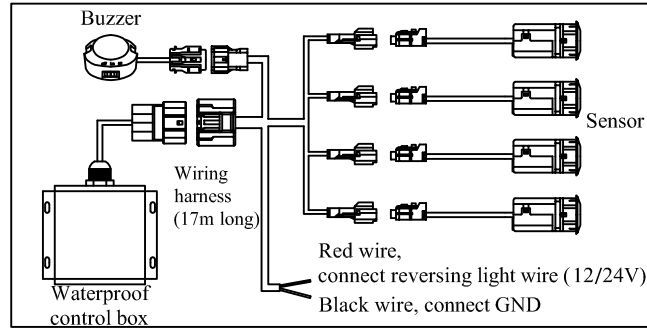
Function

1. Sound frequency change continuously, closer and faster

| Distance | Buzz | |
|-----------|----------------|---------------------|
| 3m~ | no buzz | |
| 0.5m~3.0m | BI----BI----BI | |
| | BI--BI--BI | ↓ closer and faster |
| | BIBIBI | |
| ~0.5m | constant beep | |

2. Adjustable sound volume (High/ Low /Off)

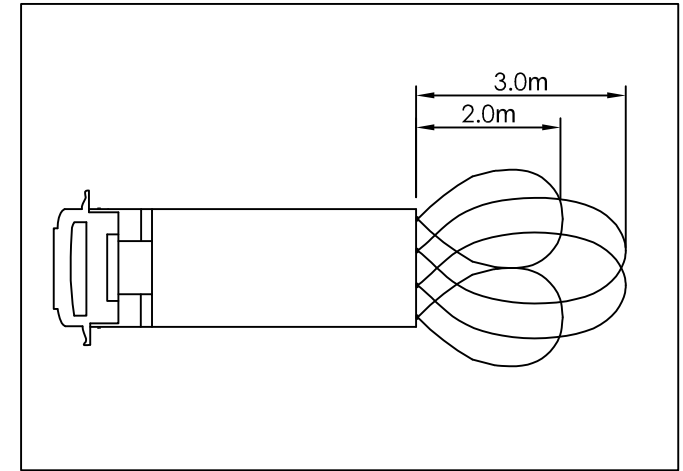
Wiring diagram



Specification

1. Operation voltage: DC 9~30V
2. Operation Temp: -30~+80 °C
3. Consumption: ≤4W
4. Detection range: 0.5m~3.0m

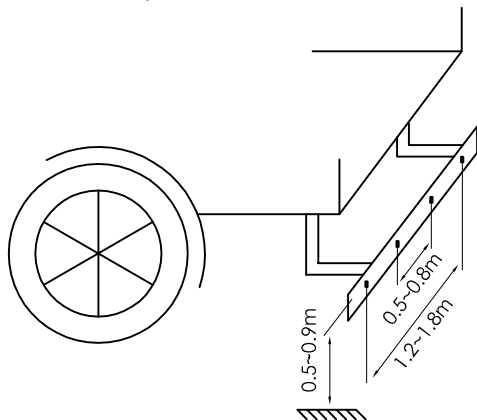
Detection area



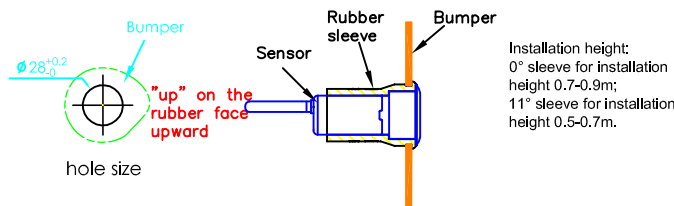
The inner sensor's detection range is 3.0m and outer's is 2.0m.

Pay attention to assembling

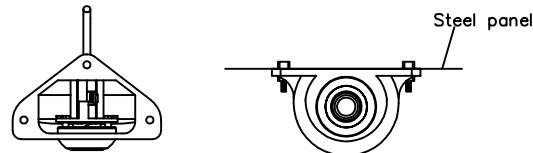
1. This product can only be used on 12V/24V automobile;
2. There are "L, CL, CR, R" labels on wiring harness showing to connect the corresponding sensor;
3. Sensor's position for reference:



(1) Installed by hole (0° & 11°)



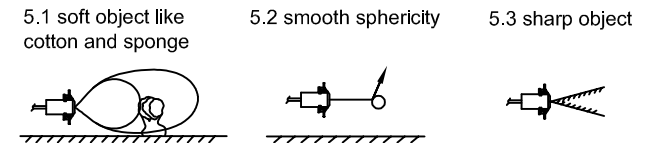
(2) Installed by bracket



Notices

1. Because of automobile inertia and other facts in practical use, please reverse automobile <6km/hr; when the display show distance less than 1.0m, please stop the automobile;

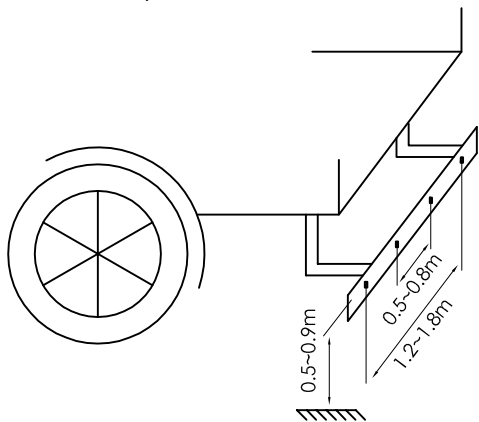
2. Please clean the ice and mud if there's any dirt on the sensor. Don't paint on the sensor surface by yourself, this will also affect the detection ability;
3. Different kinds of clothes have different sound wave reflection ability, so some of human beings may be detected in about 2.0m;
4. While driving on large angle slope, grass land or gravel road, the system may give out fault warning;
5. Attention please: The obstacles couldn't be detected easily in situations as follow:



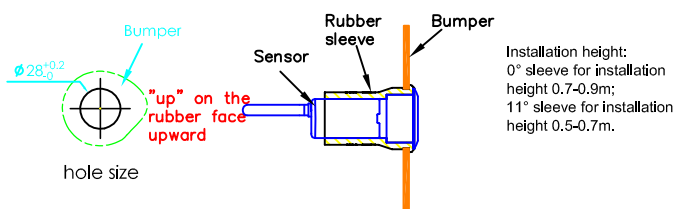
6. This system can not apply to automobiles with spare tire;
7. Parking assistance system only used as an auxiliary equipment, driver need to take responsibility of safe by himself.

Pay attention to assembling

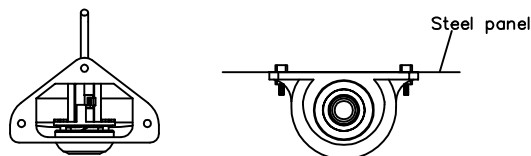
1. This product can only be used on 12V/24V automobile;
2. There are "L, CL, CR, R" labels on wiring harness showing to connect the corresponding sensor;
3. Sensor's position for reference:



- (1) Installed by hole (0° & 11°)



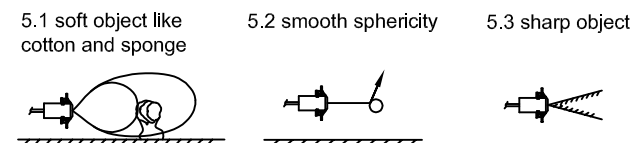
- (2) Installed by bracket



Notices

1. Because of automobile inertia and other facts in practical use, please reverse automobile <math>< 6\text{km/hr}</math>; when the display show distance less than 1.0m, please stop the automobile;

2. Please clean the ice and mud if there's any dirt on the sensor. Don't paint on the sensor surface by yourself, this will also affect the detection ability;
3. Different kinds of clothes have different sound wave reflection ability, so some of human beings may be detected in about 2.0m;
4. While driving on large angle slope, grass land or gravel road, the system may give out fault warning;
5. Attention please: The obstacles couldn't be detected easily in situations as follow:



6. This system can not apply to automobiles with spare tire;
7. Parking assistance system only used as an auxiliary equipment, driver need to take responsibility of safe by himself.

USER'S MANUAL FOR TRUCK PARKING SENSOR DT0004K3(12/24V)

The System consists of 4 digital sensors, one control box, one buzzer and one wiring harness. The system is activated when the ignition is turned on and reverse gear is engaged. The system measures the distance of the closest obstacle and then the buzzer will warn driver by warning beep.

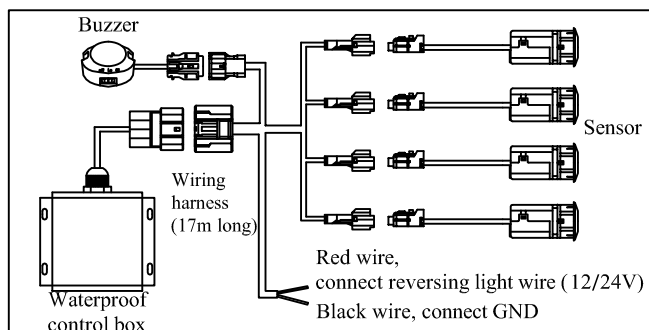
Function

1. Sound frequency change continuously, closer and faster

| Distance | Buzz | |
|-----------|----------------|---------------------|
| 3m~ | no buzz | |
| 0.5m~3.0m | BI----BI----BI | |
| | BI--BI--BI | ↓ closer and faster |
| | BIBIBI | |
| ~0.5m | constant beep | |

2. Adjustable sound volume (High/ Low /Off)

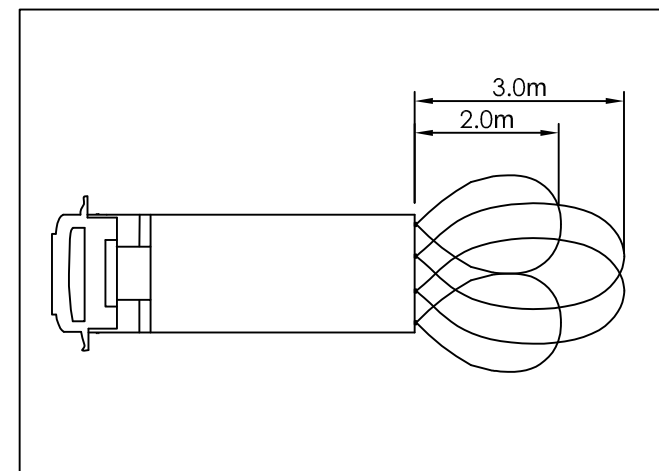
Wiring diagram



Specification

1. Operation voltage: DC 9~30V
2. Operation Temp: -30~+80 °C
3. Consumption: ≤4W
4. Detection range: 0.5m~3.0m

Detection area



The inner sensor's detection range is 3.0m and outer's is 2.0m.