



**Deflated
by mounting
tire costs?**



Tire Pressure Monitoring Systems for OTR Tires

Designed to withstand the extreme operating conditions of OTR tire applications with simple installation and low maintenance

Why Monitoring Tire Pressures on OTR Tires Matters

Maintaining proper tire inflation pressure maximizes tire life and prevents premature wear. Providing real-time pressure information including critical low tire pressure alarms helps to reduce tire-related production interruptions by proactively monitoring tire inflation pressures.

The Doran #360OTR™ Tire Pressure Monitoring System is designed to handle environments at mines (surface and underground), quarries, construction sites and ports to provide accurate and reliable digital tire pressure readings for the OTR tires on your equipment.



How It Works

The Doran 3600TR™ Tire Pressure Monitoring System

continuously monitors air pressures in OTR tires with valve-stem mounted tire pressure sensors. These large bore tire pressure sensors transmit RF signals to a digital monitor/display located in the cab. Wheel positions are programmed into the display with a customizable baseline pressure setting for each tire.

The LCD in-cab display features a Green Means Good™ LED indicator light and an interactive screen to see the current tire pressure status and real-time pressures in the tires.

The in-cab monitor/display can operate as a stand-alone system for the equipment operator or it can be integrated with telematics devices to provide off-vehicle communication of tire pressure and temperature data. For telematics integrations and additional off-equipment communication capabilities, a black box monitor is available with pre-wired data harnesses for RS232 or J1939 data outputs.



Features & Benefits

Quick Installation and Simple Programming

It is expected to take approximately 60 minutes. Installation involves providing 12v-24v power to the monitor/display, routing, mounting an external antenna mounting for more reliable sensor signal reception, programming the sensors with the baseline pressure for each wheel position to be monitored and screwing the sensor on to the valve stem.

Off-Vehicle Data Communication Integration

The Doran 3600TR™ system can be integrated to third party telematics providers to transmit tire pressure/ temperature data and alarms off equipment through RS232, J1708, and J1939 data protocols.

Wireless Digital Tire Checks

The Doran 3600TR™ tire pressure sensors wirelessly transmit digital tire pressure/temperature data using the SmartLink™ TPMS Tablet. With this feature, the SmartLink™ Tablet can be used to access tire pressure data by reading individual sensor data and collecting data from all sensors programmed into the Doran One-Click™ Transceiver with the **Equipment Walk Around** feature. The technician will also have the option to save the accessed data for review later on the tablet or PC.

DORAN 360™ TPMS WARNINGS & ALERTS

Level 1 Low Pressure	12.5% below programmed baseline pressure
Level 2 Low Pressure	25% below programmed baseline pressure
High Pressure (Optional)	25% above programmed baseline pressure
High Temperature	Activated when air in sensor reaches 175°F

Large Bore OTR Tire Pressure Sensor

Item #3607

The Doran large bore OTR tire pressure sensor is designed to reliably perform in the harsh environments found in mining, quarry and other off-the-road vehicle applications.



Features

- Patent pending seal design with built-in filter to withstand rim conditioners and other liquids present in OTR tires
- Three-piece, field replaceable brass seal for consistent valve core depression and to minimize the potential for leaks
- High performance Lithium-Ion battery for enhanced tolerance to temperature extremes and longer life
- Large, High-Impact Nylon Housing allows for additional potting material to protect the internal sensor components from damage caused by vibration, impact and extreme operating conditions

In addition to rigorous field testing, the large bore Doran OTR tire pressure sensor has successfully passed tests using SAE standards for temperature, vibration, and chemical/water resistance at an independent a2La accredited testing facility.

The #3607 OTR tire pressure sensor can also provide digital tire pressure and temperature data to the Doran SmartLink™ TPMS Tablet for fast and accurate walk-around tire checks.

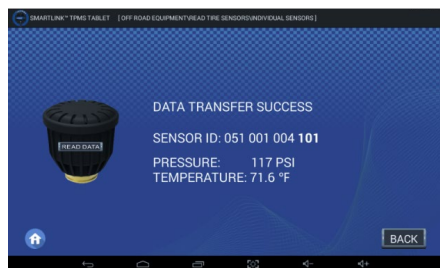


SmartLink™ TPMS Tablet

The new SmartLink™ TPMS Tablet offers several options that make tire maintenance more accurate and efficient. The Off Road Equipment application provides options to transfer data from individual RF sensors or the SmartLink™



One-Click™ Transceiver to quickly access and record digital tire pressure and temperature data from Individual Sensor Readings, Equipment Walk Arounds or by transferring the data from the SmartLink™ One-Click™ Transceiver.



The **Read Individual Sensor** feature allows the technician to hold the tablet at a reasonable distance from the tire sensor and tap on the on-screen sensor image to trigger the data transfer.

The option to read data from the tablet instead of climbing in and out of the equipment cab will save time and improve accuracy for tire pressure checks.

The **Equipment Walk Around** features is a fast and easy way to capture and store tire pressure and temperature data for each vehicle. It's designed for the technician to press and hold a tire location to transfer the tire pressure and temperature data for each wheel position.



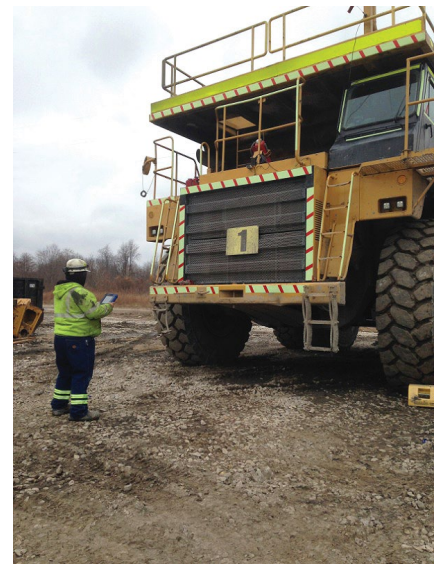
By utilizing a **Doran SmartLink™ One-Click™ Transceiver**, the tire pressure and temperature data on each vehicle is transferred from the transceiver to the SmartLink™ TPMS tablet, to instantly display data from all tires that are programmed to each piece of equipment.

Additional data, such as tread depth, tire serial number and customized wheel position IDs can also be entered.

All of the data can be saved for each piece of equipment to be transferred off the tablet to a tire maintenance software program.

DATE & TIME:		15-12-30 10:19:03		UNIT # 1111111			
TIRE No.	TIRE POSITION ID	SENSOR ID	PRESSURE	TEMP	TREAD DEPTH	TIRE SERIAL #	TIRE CONDITION
11	RS	051 001 001 210	100 PSI	73.4 °F	59 /32 Inch	DM12301501	NORMAL
12	LS	051 001 001 180	112 PSI	72.0 °F	60 /32 Inch	DM11271541	NORMAL
21	RRO	051 001 004 119	100 PSI	71.4 °F	58 /32 Inch	DM07181545	NORMAL
22	RRR	051 001 001 036	99 PSI	73.8 °F	58 /32 Inch	DM06171575	NORMAL
23	LRI	051 001 004 101	117 PSI	77.0 °F	56 /32 Inch	DM05061508	NORMAL
24	LRO	051 001 001 210	86 PSI	76.4 °F	59 /32 Inch	DM02121521	LOW PRESSURE LEVEL 1

Data is stored and can be exported to PCs for use with tire maintenance programs



SPECIFICATIONS

Monitor/Display #3600CE



Power Requirement: 12/24v
Current Draw:
Normal Mode: <77mA
Alarm and Backlight: <115mA
Sleep Mode: <70mA
Tire Positions: 1 to 36 Wheels
Dimensions: 5.65"W x 2.16"H x 1.14"D
Approx. size of chalkboard eraser
Weight: 5.40 oz

SmartLink™ One-Click™ Transceiver 36660C-35-OTR



Power Requirement: 12/24v
Dimensions: 4.5"W x 3.75 "H x 1.5"D
Weight: 0.5lbs.

SmartLink™ TPMS Tablet #360SLT



Rechargeable: 120v
Dimensions: 11.25" W x 7.5" H x 1.5"D
Screen Size: 8"
Weight: 2.75 lbs
Operating System: Android
Storage Capacity: 3.5 GB
USB Cable Included

Large Bore OTR Tire Pressure Sensor #3607



Each sensor is laser-etched with a unique 12-digit serial number that is used to program the sensor with the baseline pressure setting to a specific wheel position in the Doran monitor.

Dimensions: 1.57"D x 1.55"H
Weight: 1.7oz
Pressure Range: 10 to 188psi
Accuracy: +/- 2psi over the pressure range
Operating Frequency: 434.10MHz
Housing Material: High impact nylon
Valve Stem Thread Size:
Large Bore (.482-26)

OTR Tire Pressure Sensor Seal Kit #3607-SK



The Doran #3607 OTR tire pressure sensor is made with brass and temperature resistant seals to ensure consistent valve core depression while minimizing the potential for leaks.

Doran large bore OTR tire pressure sensor is designed to utilize a field replaceable seal kit which protects the internal electronics and components from rim conditioner.

OTR Tire Pressure Sensor Seal Replacement Tool #3607



This seal replacement tool helps to safely and efficiently remove and replace the brass and temperature resistant seals in the Doran large bore OTR tire pressure sensors.



Established in 1953, Cincinnati, Ohio based Doran Manufacturing LLC is a global leader in tire pressure monitoring systems and other transportation safety technology.

866.816.7233
www.doranmfg.com

Doran Manufacturing, LLC
2851 Massachusetts Avenue
Cincinnati, Ohio 45224